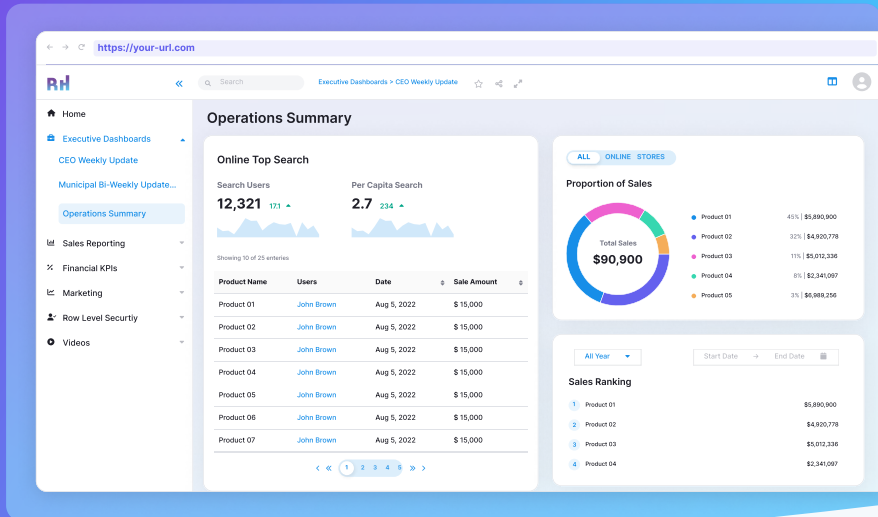


# Cut Power BI User Licensing Costs

With The Reporting Hub, you can share Power BI dashboard content with an unlimited number of users, both within and outside your organization, without incurring any additional licensing costs.



## Power BI Without the Overhead

- No Individual Licensing Fees:** Eliminate the complexity and cost associated with managing individual user licenses.
- Empowered Decision-Making:** Enable all stakeholders to make well-informed decisions using insights derived from Power BI.
- Enhanced Data Accessibility:** Provide users with access to dynamic data, breaking down information silos.
- Seamless Scalability:** Expand your reporting capabilities effortlessly as your business grows.

## Power BI Without Limits

- Centralized Data Management:** Consolidate data from diverse sources into a single, accessible platform.
- Customizable Dashboard Delivery:** Share bespoke reports and data visualizations tailored to specific business needs in custom-branded portals.
- Secure Data Handling:** Ensure the highest standards of data privacy and compliance.
- User-Friendly Interface:** Benefit from an intuitive design that simplifies navigation and enhances user experience.

## Cost Comparison Analysis: Reporting Hub vs. Power BI Service

Reach Unlimited Users, No Added Fees

Using The Reporting Hub				Using the PBI Service		
Azure Costs	Azure App Service	fixed	\$73.00	Power BI Licenses	100 users	\$10
	Azure SQL DB	fixed	\$5.00			
	Capacity Tier (F2,F4 etc) *	variable	\$263.00			
	Capacity Utilization **	variable	50%			
	Capacity Usage Spend		\$131.50			
Reporting Hub License	Business Tier ***		\$399.00			
<b>Total Monthly Cost</b>			<b>\$608.50</b>		<b>\$1,000.00</b>	

\* **Capacity Tier (F2, F4, etc):** This is a variable expense associated with different levels of computing capacity available in Azure, allowing users to scale resources according to their needs.  
 \*\* **Capacity Utilization:** This variable expense indicates how much of the allocated cloud capacity is actually used. In this instance, we used 50% capacity.  
 \*\*\* **Business Tier:** The Reporting Hub plan is based on your organization's needs. [Plans can be viewed here.](#)

## Smarter Billing with the Reporting Hub



### Unmatched Cost Efficiency

The Reporting Hub offers a significantly lower total monthly cost compared to the Power BI Service.



### Flexibility in Spending

The Reporting Hub's variable costs, combined with fixed Azure costs, provide flexibility in managing expenses based on capacity utilization.



### Simplified Budgeting

By consolidating costs into a single platform, The Reporting Hub simplifies budgeting and eliminates the complexity of managing individual licenses for each user.

[Setup your free trial today](#)